

1007-XP Series

Hazardous Location High Bay

Jobsite Lighting



Standard Features:

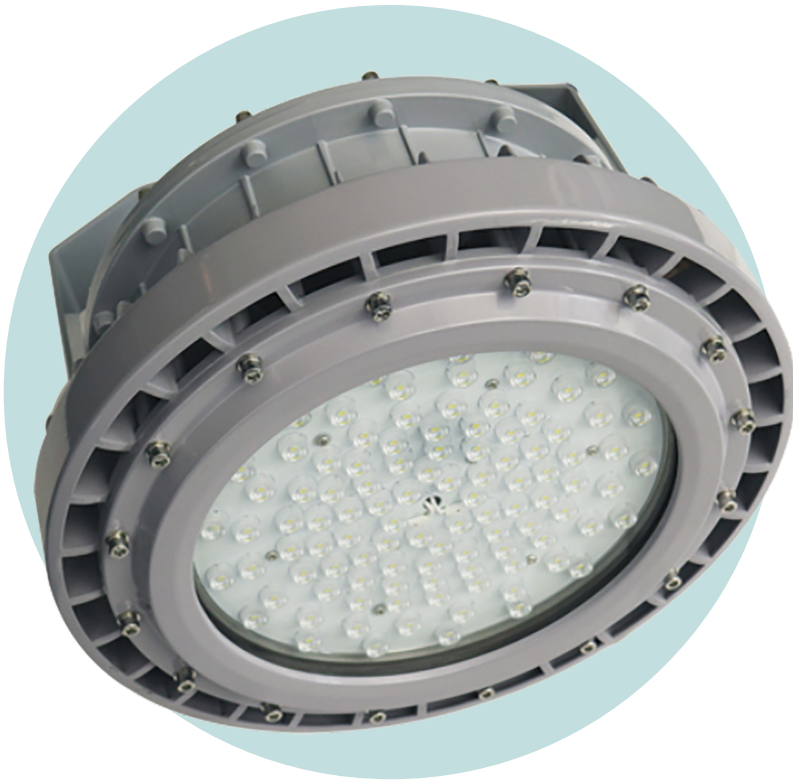
- High efficacy: up to 140lm/W
- CRI>80
- Surface and pendant mounting
- Copper free aluminium
- High vibration resistance
- 5 year warranty
- Ambient temperature range: -40°C to 60°C

Market Applications:

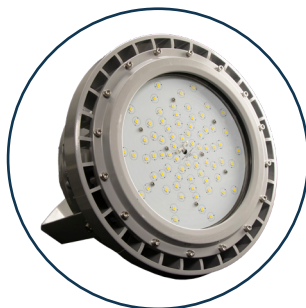
- Oil & gas industries
- Refineries
- Pumping stations
- Mining
- Vessel lighting
- High humidity areas
- High temperature locations
- Painting Applications
- Industrial Manufacturing

Ratings and Certifications:

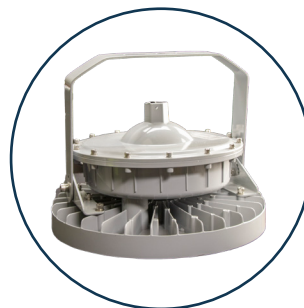
- cETLus
- UL844
- NEMA 4X, IP66
- CSA C22.2 No. 137/ No. 250.0
- Class I Division 1, Groups C, D
- Class I Division 2, Groups A, B, C, D
- Class II Division 1, Groups E, F, G
- Class II Division 2, Groups E, F, G
- Class III
- Marine and Wet locations
- UL1598 / UL1598A
- T3 rated at 60C ambient



11200, 14000 & 21000
Lumen Output



Wet Location, Marine Duty
NEMA 4X, IP66



Trunnion or rigid conduit
pendant mounting



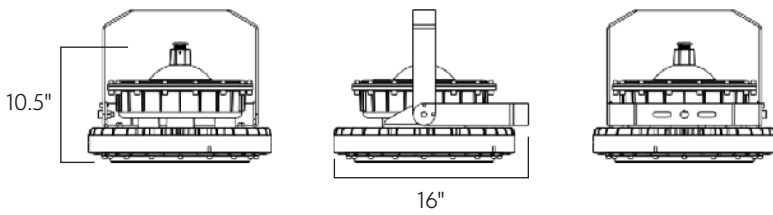
Available Portable
Cart Configuration

Selection Guide:

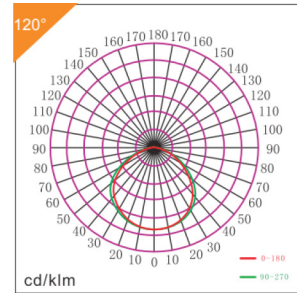
Part Number	Wattage	CCT	Voltage*	Lumens	Working Hours	CRI
1007-XP-80	80	5000K	AC100-277V	11200	5 years	80
1007-XP-100	100	5000K	AC100-277V	14000	5 years	80
1007-XP-150	150	5000K	AC100-277V	21000	5 years	80

*480V driver available

Product Dimensions:



Photometrics:



Related Products:

Click on an image or scan the QR Code for more product information.



1009 High Bay
Class 1, Div 2



2600 Series Hand Lamp
Class 1, Div 1



2600 Series String Light
Class 1, Div 1



Ericson Manufacturing Company
4323 Hamann Parkway
Willoughby, OH 44094, USA



1-800-ERICSON
info@ericson.com
L1000789F

ericson.com