



ERICSON

SAFETY IS OUR STANDARD



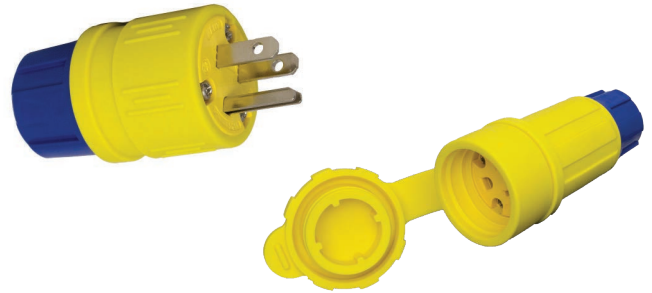
ERICSON MINING SOLUTIONS

ERICSON MINING SOLUTIONS



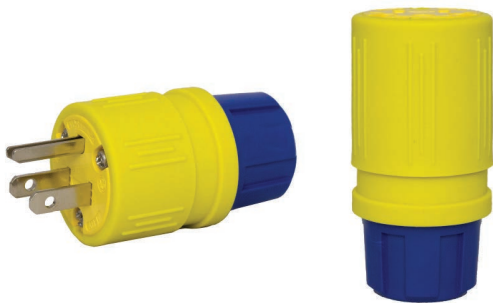
Smart Monitor® Wiring Devices

- cETLus listed for U.S. and Canada
- Monitors 7 conditions including ground continuity, reverse polarity, hot on ground, and open neutral conditions
- Available in multiple NEMA configurations
- Simplifies compliance with OSHA 1926.404 Assured Equipment Grounding Conductor programs



Perma-Tite®2 Water Tight Wiring Devices

- UL listed and CSA certified
- Extreme industrial duty, outdoor rated, watertight wiring devices
- Double tongue & groove sealing system provides environmental protection of NEMA Type 4, 4X, 6, 6P, and IP67
- Available in multiple NEMA configurations



Perma-Grip® Wiring Devices

- UL listed and CSA certified
- Industrial grade, indoor rated cord grip wiring devices
- Quick field assembly, no cable clamp screws to tighten
- Cord grip won't pinch cable like standard clamps thus providing longer use and less cable replacement
- Compression cord grips and sealing grommets included
- Available in multiple NEMA configurations



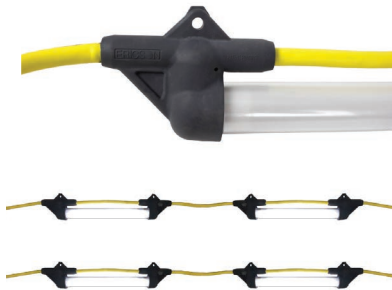
Perma-Link® Wiring Devices

- UL listed and CSA certified
- Industrial grade, indoor rated cord clamp wiring devices
- Internal cord seal keeps out dust, dirt and mud
- Available individually or on factory assembled cordsets
- Plug and connector covers may be interchanged for a weather resistant connection
- Available in multiple NEMA configurations



2 & 3 Wire Commercial String Lights

- UL or cULus listed for U.S. and Canada
- Meets OSHA construction site requirements
- Meets NEC/CEC requirements for temporary lighting
- Easy relamping with non-conductive, snap-open cage guard
- Built-in hanger for easy installation with messenger cable or hooks
- 122100-LED now comes with "EZ-Lamp" packaging and box of LED bulbs



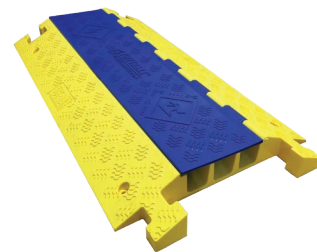
Linear LED Tube String Light

- Select models cULus listed for U.S. and Canada
- Low profile, streamlined design for easy insertion/extraction
- Industrial grade, LED string light designed for rugged environments
- NEMA 3R, 4X, and 6P rated
- Feed-thru connectivity
- Available in 200 and 360 degree beam angles
- Color temperature = 5700K, color rendition > 80
- Unique LED bulb provides theft deterrence



XG2 Series Inline GFCIs

- cULus listed for U.S. and Canada
- Meets NEC & OSHA construction site requirements
- Automatic & manual power-up models are available
- Works on 2-wire or 3-wire circuits
- Available in 15A and 20A models
- Up to 1.5 horsepower switch rating
- NEMA type 6P polycarbonate enclosure is watertight and corrosion, impact, and UV light resistant
- Class A with open neutral protection



TuffTraxx™ Cable Protection

- NEC / OSHA compliance
- Lifetime warranty
- Industry leading load ratings up to 50,000 lbs. per axle
- Industrial and Extreme duty styles
- Constructed from lightweight polyurethane
- Flexible design for easy setup and transportation
- Operating temperature range is -40° F to 120° F / -40° C to 49° C



2310-PW6P143B



1510-PW6PL143B

20 Amp Industrial Wiring Device Cordsets

- UL and CSA Listed
- Available in 50' and 100' lengths
- Available with all Ericson Industrial Wiring Devices
- Available in multiple NEMA configurations



123B - 50 ft.



123B-TT - 50 ft.



123D - 100 ft.



123D-TT - 100 ft.

15 Amp Molded Cordsets

- UL and CSA Listed
- Available in 50' and 100' lengths
- Available with all Ericson Industrial Wiring Devices
- Available in multiple NEMA configurations



**MANUFACTURING ELECTRICAL SAFETY
PRODUCTS FOR OVER 100 YEARS**

4323 Hamann Parkway
Willoughby, OH, 44094
info@ericson.com
ericson.com
1.800.374.2766
L1000814A